
SIMPSON NEWS

SIMPSON UNITED METHODIST CHURCH

NEW LEADERSHIP BOARD

Starting January 1st, Simpson has a new slate of leaders who will be organized using the single-board governance model for 2024. Below are the members of this new board:

Board Chair - Karla Cornish

Trustees Team - Cindy Kondo, Todd Namba, and Ken Namba

Finance - Dennis Kitayama

Staff-Parish Relations - Jane Nakama, Noelle Maynell, and Stacey Shigaya

Co-Lay Leaders - Charlotte Namba and Christine Howland

At-Large Member - Dean Tsutsui

Recording Secretary - Vacant

For any questions and issues regarding the building (e.g., use, repairs, etc.), you can reach the Trustees team at **trustees@simpsonumc.com**.

For any questions and issues regarding finances, you can reach the Finance team at **finance@simpsonumc.com**.

For any questions and issues regarding Rev. Brian and the Simpson staff, please email **spr@simpsonumc.com**.

If you have questions about single-board governance, contact Rev. Brian at revbrian@simpsonumc.com or 720-381-4129. Please let Rev. Brian know if you are interested in serving as the recording secretary.



If you want to speak with Rev. Brian, call him at 720-381-4129 or email him at revbrian@simpsonumc.com. While you can always find him at the Simpson building on Sunday mornings, please get in touch with him if you want to meet him in person during the week.

VALENTINE CARE PACKAGES



A huge thank you to Paula Matsumoto for organizing Simpson and Westminster folks to assemble Valentine's Day gift bags for residents at Arvada Care. Thanks to everybody's work, 40 seniors at Arvada Care received cards, crocheted hearts, and treats. More than that, the residents were reminded that they are loved and not alone.

BOWLING TOURNAMENT BENTO BOXES

Thank you, Bowling Tournament Bento Box volunteers! Thank you for coming out in the snow to prep for the bentos; for showing up early on Saturday to prepare all the food; and, on Sunday to make Spam musubi. And to the sellers, thanks for staying at the bowling alley and selling all that we made. We have received many, many accolades from people who bought our food - praise for taste and presentation. We made 140+ bentos and hundreds of Spam musubi. We couldn't have done it without you. It was a lot of work but it's always great to work together. - Charlotte



DOUMO ARIGATOU GOZAIMASU

We are grateful for the many ways people support our church with generous gifts. Our tradition is to publicly thank those who give special gifts. Please note that as some prefer to donate anonymously, this is not a complete list of donors. Giving information as of January 29th, 2024.

In Memory of:

Walt Sagara

Yukio Furuiye

Hatsuko & Banji Menda

The Ito Family

Patty Goto

Christmas

Tim Cleary

Dion Dishong

Bob Fujioka

Masako Furuiye

Lily Goto

Curtis Higuchi

Craig Iriye

Robert Ito

Peter Menda

Alan & Stacey Mochizuki

Jane Nakama

Karen Padrick

Ruth Shinto

Randy & Cynthia Shioshita

Catheryn Smith

Gloria Smith

Ed and Flo Yamaguchi

Calvin Yukihiro

Given by:

Jim Shinto, Pam Shinto, Ed &

Flo Yamaguchi

Carol Yamamoto

Peter Menda

Alan Ito

Alan Suzuki

Newsletter

Masako Furuiye

Ed and Flo Yamaguchi

Thanksgiving

Ed and Flo Yamaguchi

Scholarship Fund

Keith Hora

Utilities

Pam Shinto

Ruth Shinto

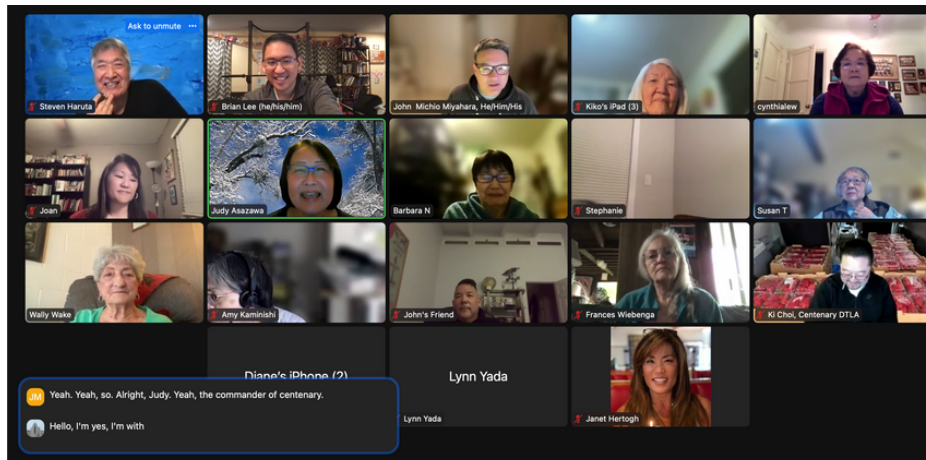
January Breakfast Casseroles for Mission Arvada

Thank you to Jane Nakama and Karen Padrick for helping put together breakfast casseroles on January 14, 2024. You all are so appreciated!

Warmly, Terry & John Hall



JAUMC LENTEN STUDY



You can join Rev. John Miyahara, Rev. Brian, and Japanese American United Methodist Caucus congregation members in a 6-week Lenten book study. They are reading *Savior: What the Bible Says about the Cross* by Magrey de Vega. Just so you know, reading the book isn't required! The study started on February 19th and will conclude on March 25th. The study begins 7:30 p.m. on Monday evenings. The Zoom link to join is <https://zoom.us/j/97254880565?pwd=MXZqTmplckVFZVBXMXBYOG53SUQ2dz09>.

WORSHIP SCHEDULE

- March 3rd at 10 a.m. (Short service with Communion)
- March 10th at 10 a.m.
- March 17th at 10 a.m.
- March 24th at 10 a.m. (Palm Sunday)
- March 31st at 10 a.m. (Easter Sunday)

You can come to worship in-person or virtually by using the following link:

[https://us02web.zoom.us/j/87520951862?](https://us02web.zoom.us/j/87520951862?pwd=VUZ1QkNMd2ZvSTZYVWd0eEIUVZkQT09)
[pwd=VUZ1QkNMd2ZvSTZYVWd0eEIUVZkQT09](https://us02web.zoom.us/j/87520951862?pwd=VUZ1QkNMd2ZvSTZYVWd0eEIUVZkQT09)

OTHER DATES TO REMEMBER

- March 2nd and 3rd from 11:30 a.m. to 4 p.m. - Hina Matsuri
- March 6th at 6 p.m. - Lenten Study and Soup Supper in Nichigo Sanctuary
- March 13th at 6 p.m. - Lenten Study and Soup Supper in Nichigo Sanctuary
- March 20th at 6 p.m. - Lenten Study and Soup Supper in Nichigo Sanctuary
- March 27th at 6 p.m. - Lenten Study and Soup Supper in Nichigo Sanctuary

You can always find out what's happening at Simpson by checking the calendar at <https://www.simpsonumc.com/calendar/>. If you would like to have an event put on the calendar, please email events@simpsonumc.com

CELEBRATING THE 54th ANNIVERSARY OF DOLL & CULTURAL FESTIVAL (HINA MATSURI)
CELEBRATING THE 117th ANNIVERSARY OF SIMPSON UNITED METHODIST CHURCH

DOLL & CULTURAL FESTIVAL

ひなまつり

FREE ADMISSION

Saturday March 2nd & Sunday March 3rd, 2024 11:30 a.m. – 4:00 p.m.



6011 WOLFF ST.
ARVADA, CO

303-428-7963

FEATURING:

Origami
Tea Ceremony
Bonsai
Ikebana
Taiko

Martial Arts
Japanese Music
-Koto
-Shamisen
-Ukulele Group

Folk Dance



Japanese lunch
At A Nominal Fee, While Supplies Last

FUTURE EVENTS:

Saturday, May 4	Bazaar
Saturday August	Peach Sale (Orders taken in July)
Sunday October 20	Arts & Crafts Showcase
Saturday December	Mochi Sale
Sunday December	Poinsettia Sale
